



W I D E H O R I Z O N

8900 West 38th Avenue
Wheat Ridge, Colorado 80033

Return Service Requested

Phone 303-424-4445
Fax 303-422-6373

NON-PROFIT ORG.

U.S. POSTAGE

PAID

Wheat Ridge, CO
Permit No. 19

Board of Directors

Richard Davis, *Chairman*
Larry Combs, *Vice Chair*
Jeanne Salo, *Treasurer*
Jerry Farmer, C.S.
Mary Louise Parsons, C.S.
Robert Schoenfeld
Carolyn Talcott

Executive and Managerial Staff

D. Brian Boettiger, *Executive Director*
Susan Wood, *Director of Christian Science Nursing*
Carol Hanauer, *Asst. Dir. of Christian Science Nursing*
Calaine Ohmert, *Business Manager*
Jan Dillingham, *Activities Director*
Margit Foster, *Food Services Manager*
Eleanor Mandonado, *Housekeeping Manager*
William "Bill" Wright, *Facilities Manager*

Wide Horizon Herald

Spring 2011

New Name for North Building

We would like to rename the existing North Building once the expansion construction is completed. For six and seven figure contributions, consideration will be given to renaming the building and/or rooms, appropriately.

“Garage Sale” in August!

Wide Horizon will have its huge “garage sale” this August 5 & 6! Donations will be accepted beginning May 1. Volunteers to help are always welcome and needed!



Visit our newly designed website

www.widehorizon.org

See the new building design drawings, updated capital campaign brochure, and other helpful information.

Donations can be made online: via our website at www.widehorizon.org, where you can also learn about Wide Horizon and its Christian Science nursing activity. Thank you!



North Building Expansion Update

*By D. Brian Boettiger,
Executive Director*

We are very grateful to the members of Wide Horizon who attended the special meeting of March 6, 2011 and voted unanimously in favor of the motion presented by the Board of Directors to move forward with the North Building Expansion Project.

The design and construction team has assured us that the construction program will be accomplished for \$1,500,000. We are about \$400,000 short of cash and pledges to meet that figure and would love to have your prayerful support in this undertaking during the coming months. Of course, your financial support is also needed. Other costs, not included in the construction contract, are the

professional architectural and engineering services as well as government fees/taxes, telephone system, computer network, nurse call system, audio-visual system, furniture, and security changes. We anticipate these non-construction costs to total about \$750,000, which can be covered, if need be, by funds from Wide Horizon's investments. This is something we'd rather not have to do, but are prepared to if need be, if the funds are not raised in time.

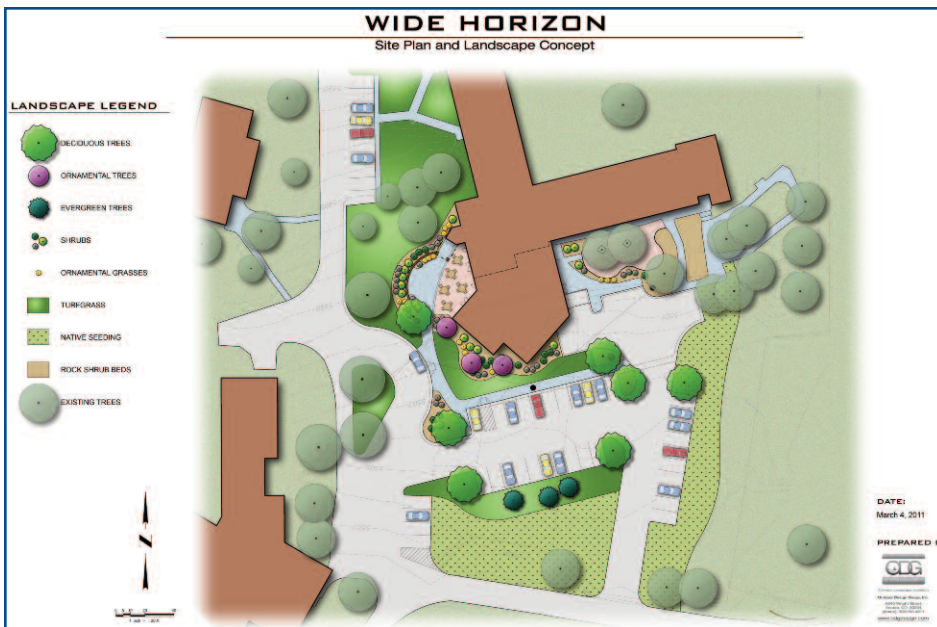
In addition to the blessed activity of Christian Science nursing, our collective vision for Wide Horizon is that it becomes a site where many Christian Science activities can regularly occur. This beautiful, inspiring

site can be one that Christian Science institutions, including branch churches, will utilize in what can become a Christian Science campus for the Rocky Mountain Region. It is our hope that Wide Horizon expands its services and broadens its community to include all sincere seekers of Truth who are students of Christian Science.

\$100,000 Matching Pledge Drive!

We are very grateful to announce that a donor has pledged \$100,000 toward the North Building Expansion Project that can be matched dollar for dollar! This is your opportunity to double your contribution! Help make a difference—donate now or before June 30, 2011! Do you know of others with financial means that care about Christian Science nursing and love Wide Horizon who may wish to contribute?

THANK YOU!



The new architectural design, by William Brummett Architects, will feature home-like and/or "Green House" construction.

Volunteering is a Blessing

By Virginia Rouse Dixon

“To those leaning on the sustaining infinite, today is big with blessings.” –*Science and Health with Key to the Scriptures*

I have had the privilege of volunteering at Wide Horizon for over a year and a half now. It has truly been one of the most joyous experiences I have ever had! I get to witness the spiritual truth of Christian Science at work every day.

I see Wide Horizon as a home for growth, harmony and healing. It sits on a hill with spectacular views of the Rocky Mountains and large acreage where you can take a

peaceful walk and enjoy the pond or garden. But, it offers so much more. There is such an atmosphere of God’s love and peace.

The nurses and support staff have been an inspiration to me! They each share a unity of thought and a genuine love for their fellow man. Not only do they give physical and prayerful support to each patient but there is such respect and care shown.

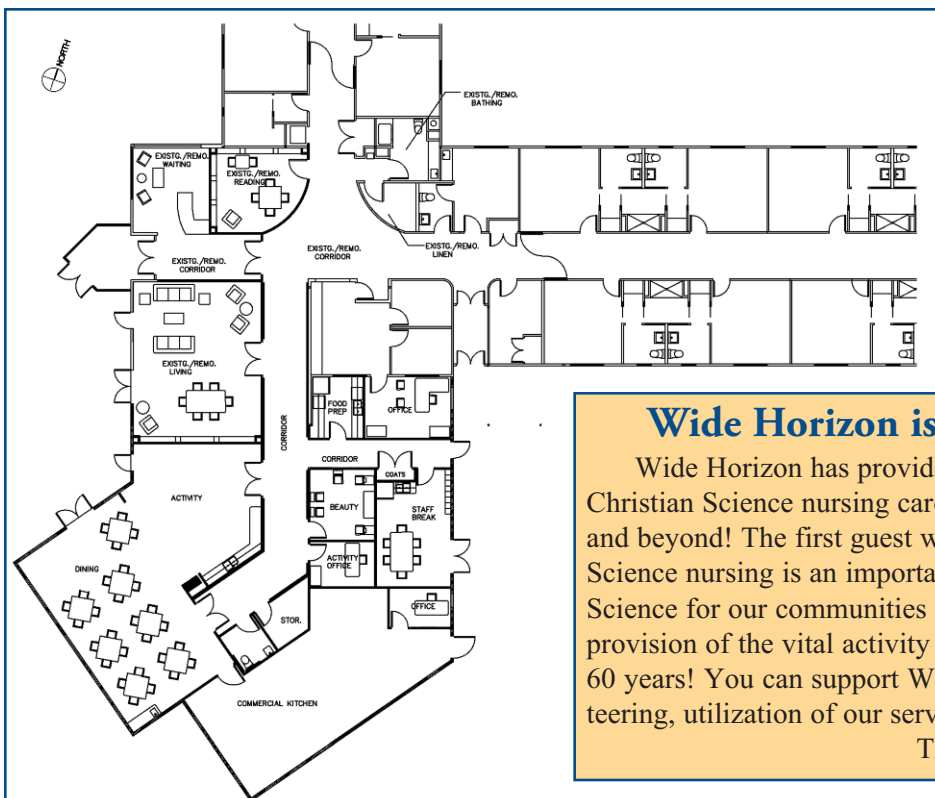
I have helped to assist with various residents and have been humbled and touched by some of the dearest Christian Scientists. I get to observe each one living God’s truth. They have helped me grow in many ways.

When I started volunteering at Wide Horizon I wanted to give back and show gratitude for the many blessings that Christian Science has offered me. But for everything I have given, I have received so much more in return! I am grateful that we have Wide Horizon as a place to actively practice our faith by volunteering. It is a blessed place of healing and spiritual growth!

“Are we really grateful for the good already received? Then we shall avail ourselves of the blessings we have, and thus be fitted to receive more.” –*Science and Health*

You can stay at Horizon House for free!

You can stay at Horizon House for free! If you are interested in Supervised Residential Living at Wide Horizon, we welcome you to **stay for five days free** in one of the beautifully decorated and furnished efficiency apartments at Horizon House. All the rooms include meals, laundry and housekeeping, as requested and/or needed. If a relative or close friend is a guest in the North Building, the same free occasional option is available for you in Horizon House. Call us and come for a visit!



North Building Expansion

Left: Proposed floor plan for upper level of North Building expansion. See page 3 for exterior elevations and the lower level floor plan.

Wide Horizon is celebrating its 60th year

Wide Horizon has provided 60 years of uninterrupted service of Christian Science nursing care to the Rocky Mountain States region and beyond! The first guest was served in January 1951! Christian Science nursing is an important component of the Cause of Christian Science for our communities and to mankind. Help us to continue this provision of the vital activity of Christian Science nursing for another 60 years! You can support Wide Horizon with your prayers, by volunteering, utilization of our services and/or giving financially.

THANK YOU!

Benevolence Blesses Both Giver & Recipient

Wide Horizon needs your help to continue the substantial and continual progress that has been made in its first 60 years of operations and service.

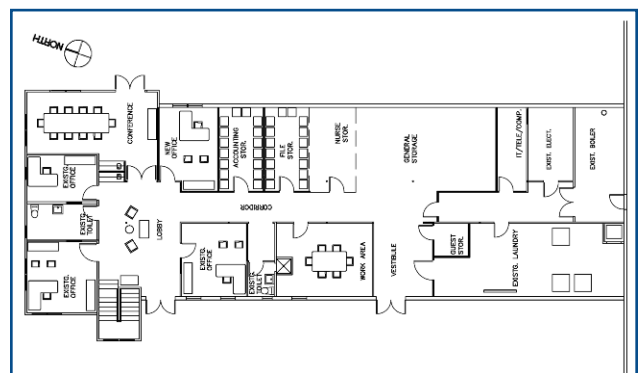
During the past few years, the facility has been nearly full, but more recently there have been comparatively fewer numbers of guests. In addition, benevolence for our guests has increased over the years. Unfortunately, as benevolence expended has increased, total contributions have not kept pace.

We are asking you to consider making regular contributions to Wide Horizon in support of its spiritual activity of Christian Science nursing. This Christly activity that cares directly for our guests works hand in hand with the Christian Science practice to demonstrate and promote spiritually scientific healing. All those who come to Wide Horizon do so

seeking the “Christ-cure.” (*Science and Health with Key to the Scriptures*, p. 367) In fact, if everyone who receives this message contributes only \$20 per month (less than many pay for monthly cell phone or television service) Wide Horizon would have about \$240,000 annually for benevolence! Or if everyone contributed \$30 a month (just one dollar a day) we would have \$360,000 annually. This kind of ongoing donation would be a great way to help support Wide Horizon’s ongoing need for benevolence—would help us get back on track since donations to this fund have lagged while donations are coming in to the building fund.

Let us join together in support of the vital activ-

ity of Christian Science nursing care to continue making it available to all. This heavenly activity helps meet the needs of those who cannot afford the costs of their care. You can become a new participant in our “Loaves & Fishes” program by contributing monthly via direct deductions from either a checking account or credit card. We can help set up this tax-deductible gift for you.



Proposed floor plan for lower level of North Building expansion (note rotation of drawing).

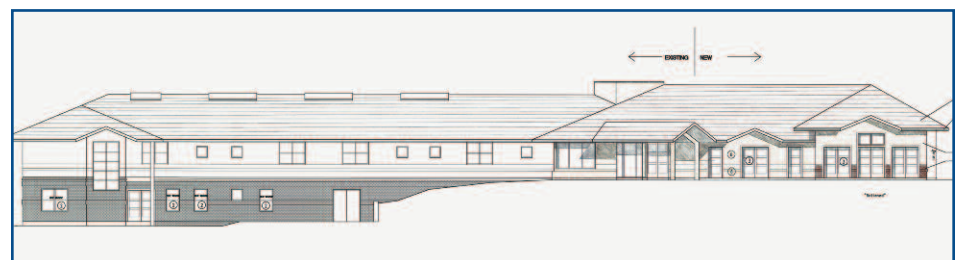
Philanthropy Blesses the Giver

Mary Baker Eddy reminds us of the importance of philanthropy as an expression of Love: “In love for man we gain the only and true sense of love for God, practical good, and so rise and still rise to His image and likeness, and are made partakers of that Mind whence springs the universe. Philanthropy is loving, ameliorative, revolutionary; it wakens lofty desires, new possibilities, achievements, and energies; it lays the axe at the root of the tree that bringeth not forth good fruit; it touches thought to spiritual issues, systematizes action, and insures success; it starts the wheels of right reason, revelation, justice, and mercy; it unselfs men and pushes on the ages.” (*Miscellany*, pp. 287-288)

On behalf of all the guests who benefit from your philanthropy and generosity and from all of us who see what a difference your contributions and prayers make, we say, THANK YOU!



Above: Exterior elevation of new North Building expansion, from the south; below: from the west.



Donate Your Car!

Wide Horizon could use a reliable minivan! A minivan in good condition would help us transport our guests. Or you can donate your unwanted vehicle to Wide Horizon through Automobile Donation Charity, 866-697-0697 or www.automobiledonationcharity.org. Wide Horizon would get half of the profit for each vehicle, but your gift would be all tax-deductible!